



Blue Ridge District Newsletter United Methodist Women

The organized unit of United Methodist Women shall be a community of women whose PURPOSE is to know God and to experience freedom as whole persons through Jesus Christ; to develop a creative, supportive fellowship; and to expand concepts of mission through participation in the global ministries of the church.

Blue Ridge District United Methodist Women

2014 Annual Meeting



Moving On In Celebration

Join the local units of the Blue Ridge District as we come together to celebrate the work of the UMW this past year as well as get fresh ideas for the year to come.

When: August 23, 2014, 9:30 registration, 10:00 meeting

Where: Brooks-Howell Home, 266 Merrimon Ave, Asheville

Parking: will be available at St. Paul's UMC parking lot with a shuttle to Brooks Howell for your convenience

Hands on Project: School Kits (see pages 10 - 12 for contents and assembly instructions)

Program Resources: Please see Kathy Kennedy's important information on page 8.

Directions to Brooks-Howell Home: **From I-26 West:** Merge onto I-26 W/US-25N, Keep right to stay on I-26 W, follow signs for Interstate 26 W/Asheville/Interstate 240, Continue onto I-240 E, **From I-26 E/US-19/23 S:** Keep left at the fork, follow signs for Interstate 240 E/U.S. 70 E/Expressway and merge onto I-240 E/US-70 E, **From I-40 West:** Take exit 46B on the left to merge onto I-240 E/I-26 W toward Asheville, Continue to follow I-240 E, **From I-240 East:** Take exit 53B for Interstate 240 W/US74 Alternate W toward Asheville, Keep left at the fork, Follow signs for UNC-Asheville and merge onto I-240 W, **For all directions above:** Take exit 5A toward US-25/Merrimon Ave. Brooks Howell Home will be on your left after you pass Hillside St.

Attending the annual meeting fulfills criteria #11 of Mission Today Unit!!!

Blue Ridge District United Methodist Women 2014 OFFICERS

President

Joanie Strohm
(Weaverville)
111 Collins Road
Marshall, NC 28753
(828) 649-1156
ssjsmars@charter.net

Vice President

Beverly Hill
(Black Mountain)
202 Border Street
Black Mountain, NC 28711
(828) 669-9309
beverly.hill@marc-otp.com

Secretary

Karen Anderson
(Skyland)
9 Chestnut Mountain Ridge
Asheville, NC 28803
(828) 628-9385
ksanderson95@gmail.com

Treasurer

Carol Bryson
(Grace)
14 Buckner Road
Leicester, NC 28748
(828) 683-4141
csbryson64@gmail.com

Spiritual Growth, MC

Tracey Owens
(Acton)
24 Acton Woods Road
Candler, NC 28715
828-246-6006
traceybhh@gmail.com

MC Education & Interpretation

Gwen Harris (Windom)
215 Grand View Lane
Burnsville, NC 28714
(828) 682-4589
hgwen1@frontier.com

Social Action, MC

Lucy Earls
(Oak Grove)
913 Race Path Church Rd.
Ellenboro, NC 28040
(828) 453-8566
jlearls@att.net

Membership Nurture & Outreach

Kathey Morgan (Piney
Mountain)
23 Sesame Circle
Candler, NC 28715
(828) 667-0170
kmorgan1474@outlook.com

Secretary of Program Resources

Kathy Kennedy (Grace)
PO Box 2556
Leicester, NC 28748
(828) 683-4678
cell (828) 231-3229
kenkat12003@yahoo.com

Communications Coordinator

Peggy Sanders (Skyland)
121 Deerlake Drive
Asheville, NC 28803
(828) 606-7947
peggy.sanders0522@gmail.com

Parliamentarian

Betty Letzig
(St. Paul's)
266 Merrimon Avenue
Asheville, NC 28801
(828) 255-0414
kenkat12003@yahoo.com

Historian

Judy Hawkins (Oak Grove)
1491 Oak Grove Church Rd
Ellenboro, NC 28040
(828) 443-4564
judyhawkins56@yahoo.com

Committee on Nominations 2014

Jackie Rio, Chairperson, 101 2nd St, Black Mountain (Black Mountain UMC)
828-669-2885; email: jackierio@bellsouth.net

Dorothy Johnson, 63 Tomahawk Trail, Marion, NC 28752 (Addie's Chapel)
(828)738-8148, email: dot.johnson47@gmail.com

Barbara Blevins, 108 Montford Ave. #7, Asheville, NC 28801 (Acton)
(678) 234-2615, email: barjsep20@gmail.com

Sue Glovier, 861 Ebenezer Church Road, Old Fort, NC 28762 (Ebenezer)
(828) 674-7661; no email

Doris Morrison, 107 Circle Dr., Morganton, NC 28655 (Snow Hill)
828-433-7796; email : dorismorrison@att.net

Dixie Liggett, 8 Springside Park, Asheville, NC 28803 (Skyland)
(828) 684-1831; email: lliggett3@charter.net

The Blue Ridge District Newsletter is published quarterly. Send any information you would like to have included to the Editor below. (Acceptance of articles will depend on space and available interest to the entire District.)

Editor: Peggy Sanders
121 Deerlake Drive
Asheville, NC 28803
(828) 606-7947
peggy.sanders0522@gmail.com

2014 NURTURING PARTNERS (SHEPHERDESSES)

Your Nurturing Partner is a personalized connection between your district leaders and your unit. Please call your Nurturing Partner during the year if you have any questions or needs. She will be notifying you to remind you about special events throughout the year. Your Nurturing Partner would like to come visit your unit and would appreciate an invitation. Our goal is to visit every unit throughout the district during the year.

PLEASE ASK YOUR NURTURING PARTNER TO VISIT YOUR UNIT!

<p><u>Ann Aldridge</u> 828-433-0988 Thermal City Pinnacle St. Timothy</p>	<p><u>Sue Glover</u> 828-674-7661 Nebo Old Fort Caroleen Lebanon St. Mark's</p>	<p><u>Kathy Morgan</u> 828-667-0170 Black Mountain Groce Swannanoa Skyland</p>
<p><u>Karen Anderson</u> 828-628-9385 Oak Hill Trinity-Asheville Saluda Glennwood</p>	<p><u>Gwen Harris</u> 828-682-4589 Spruce Pine Bald Creek Higgins Memorial Mars Hill</p>	<p><u>Doris Morrison</u> 828-433-7796 Pleasant Hill Addie's Chapel Clinchfield</p>
<p><u>Barbara Blevins</u> 678-234-2615 Bethel Montmorenci Biltmore</p>	<p><u>Judy Hawkins</u> 828-443-4564 Mt. Hebron-Centennial Snow Hill-Morganton Gilboa</p>	<p><u>Tracey Owens</u> 828-633-2322 Abernethy Snow Hill-Candler Tryon Sardis</p>
<p><u>Carol Bryson</u> 828-683-4141 Avery's Creek Reeves Chapel Edneyville</p>	<p><u>Beverly Hill</u> 828-669-9309 Asbury Memorial East Asheville East Marion Upward</p>	<p><u>Jo Pyatt</u> 828-652-2530 Piney Mountain Oak Grove Rutherfordton First Kistler's Chapel</p>
<p><u>Barbara Campbell</u> 828-225-0414 Pleasant Hill-Candler Brevard</p>	<p><u>Dorothy Johnson</u> 828-738-8148 Well Springs Concord Gilkey First Marion</p>	<p><u>Jackie Rio</u> 828-669-2885 Emma Spindale Balfour</p>
<p><u>Maureen Carr</u> 828-277-7065 Windom Hope Dix Creek</p>	<p><u>Kathy Kennedy</u> 828-683-4678 Weaverville Acton Oakley</p>	<p><u>Peggy Sanders</u> 828-606-7947 Central Fairview Sharon Moore's Grove Grace</p>
<p><u>Lucy Earls</u> 828-453-8566 Mundy's Chapel Salem-Bostic Trinity Providence-Forest City Tanner's Grove</p>	<p><u>Betty Letzig</u> 828-255-0414 Hendersonville First Fletcher Mills River Columbus</p>	<p><u>Joanie Strohm</u> 828-649-1156 Brevard Ebenezer Forest City Salem St. Paul's St. Timothy's</p>

A Message from Your President



Do you know about a very special place called J. Iverson Riddle Developmental Center in Morganton? Many of the Blue Ridge District United Methodist Women's executive team had not and when we were invited by Chaplain Carol Morgan to visit the center, we accepted. I would dare say all of us went away that day informed, inspired, and awed at the work that is going on at this facility. We met some very special people who led us in worship and also on a tour of the campus. With the social action study "The Church and People with Disabilities: Awareness, Accessibility, and Advocacy" being offered at Mission u this summer, it made the trip even more timely. You will be hearing more about this visit! I hope you are planning to attend Mission u, July 17-20, at Pfeiffer University. I pray all of us will take seriously the inclusion of our brothers and sisters who have disabilities in all of life's experiences and especially the experience of worship and in the life of the church.

The conversation about health care has reached beyond the United States. United Methodist Women and the United Methodist Committee on Relief (UMCOR) announced a joint initiative on maternal health during Assembly held in April. More than 300,000 women around the world die each year during pregnancy and childbirth because they lack access to a proper health facility or to health workers, or even because they have no say in their own reproductive health. This new partnership will help raise awareness of the challenges and strengthen programs that will help women and children all around the world have better health care. Part of the Assembly offering will go to this initiative.

I have enjoyed so much the visits I have made to your units, the conversations on the phone we have shared, and even the adventure of replacing a lost Special Mission Recognition pin. The loving relationships of United Methodist Women with one another is something we don't celebrate nearly enough. I treasure each of you and will continue to look forward to the visits we have at meetings, on the phone, and via email.

Speaking of celebrations, I have heard about only one plan of celebration for the 145th anniversary of our organization in our units. This unit is going to have its celebration in the Governor's Summer Residence in Asheville and celebrate the history of the world wide organization and the history of Western North Carolina's United Methodist Women. Think of a special way your unit can celebrate our 145th anniversary!

Dates to remember:

August 23: District Annual Meeting at Brooks Howell Home

September 5-7: Conference Annual Meeting at Lake Junaluska

October 18: Ubuntu Day of Service at Brooks Howell Home

May your life be filled with faith, hope, and love that motivates you to action for women, children, and youth.

Joanie Strohm, *Blue Ridge District President*

Special Mission Recognition Gifts offer a meaningful way to honor members who have dedicated so much time and effort to service. It can be any amount. (It does not always have to include a pin.) Please don't forget to recognize your special members.

Vice-President



Tired of the same old/same old stuff at the UMW meetings? Have you noticed the attendance falling off? Or have you found something that really works for your unit- a really interesting program or a meeting time or format that works well? Please come to the Annual Meeting at Brooks Howell on August 23 (see front) to share your ideas and to hear new ones that you can use in your program planning to keep your unit fresh and alive! You will also hear and learn more about our own Brooks Howell home in Asheville- and maybe meet some great resources for your local unit programs. And for more inspiration, make sure you attend the Mission U event at Pfeiffer College in July. There you will have the opportunity to learn more and take some of the mission studies for the coming year, gaining exciting ways to present the study in your unit. Bring a friend to both! See you there!

Beverly Hill, *Blue Ridge District Vice President*

Secretary



The past couple of years have held a number of UMW “firsts” for me – Prayer Breakfast, district and conference annual meetings, Mission u, 2014 Assembly in Louisville, and recently the Spiritual Growth Retreat at Lake Junaluska. They’ve been rewarding experiences, making me wonder why I hadn’t participated before now in my decade or so as a United Methodist Woman. Not only is it a joy and encouragement to be around so many dedicated women of faith and action, but it’s also a great learning experience. I’m still thinking about the benefits of the June Spiritual Growth Retreat -- whose theme “Joy” was evident all around the beautiful Lake Junaluska setting -- and everything I learned at Assembly in April. So if you haven’t participated in a UMW event, I encourage you to step beyond your circle or unit and attend one of these special activities. Much thought and planning go into each one, and it shows. Coming up are Mission u at Pfeiffer University July 17-20, Blue Ridge District Annual Meeting at Brooks-Howell Home in Asheville on Aug. 23, and the WNC Conference Annual Meeting at Lake Junaluska Sept. 5-7. Information is available at www.wnccumw.org.

Karen Anderson, *Blue Ridge District Secretary*

Treasurer



Hard to believe we have completed one half of our UMW year. Hope all of you are having a wonderful summer. I also hope many of you are making plans to attend upcoming District and Conference events. As we celebrate 145 years of United Methodist Women, I call your attention to our mission giving.

CELEBRATE!! Our Conference Treasurer, Martha Phillips, has received the 2013 giving report from the National Office. For the **13th consecutive year**, Western North Carolina

Conference led the nation in:

- ✓ Special Mission Recognition
- ✓ Gift in Memory
- ✓ World Thank Offerings
- ✓ Call to Prayer and Self Denial
- ✓ Total Mission Giving (the five channels)
- ✓ Total Giving

For the second year in a row we also led the nation in PLEDGE TO MISSION!

The year-end audit confirms our annual total giving of \$895,013.70 to the National Office. **All units** celebrate because you are making mission possible.

CELEBRATE!! Blue Ridge District United Methodist Women total giving for first half of 2014 is \$43,060.96. Pledge to Mission giving is \$29,993.43. This is wonderful news but we cannot slow down. I urge you to continue stressing mission giving in all our units. Remember no gift to mission is too small. As the song says “little is much when God is in it”.

Thank you to all our United Methodist Women for generously giving to make missions for women, children, and youth possible.

Carol Bryson , Blue Ridge District Treasurer

Spiritual Growth

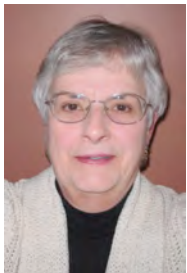


Seven hundred and fifty-two women (and a few men!) from across Western North Carolina gathered for a refreshing weekend for the body, mind, and soul at the Conference UMW Spiritual Growth Retreat at Lake Junaluska on June 13 – 14. The theme was “JOY” and Rev. Tiffany Thomas of South Tryon Community Church in Charlotte was such an inspirational speaker who spoke on the messages *God is God, Not Them; God is God, Not Me; and God is God, Thank God!* The music at the retreat, as well as the concert by the Junaluska Singers, was phenomenal. The ending Communion Service is always a wonderful way to go home with a renewed spirit. Mark your calendars for next year’s retreat, June 12 - 13, 2015.

I’d like to mention the Ubuntu Day of Service on Saturday, October 18, 2014 from 9 am – 3 pm. One of the Mission Institutes is in our District. Brooks-Howell Home is one of the sites for service that day. Projects are landscaping, cleaning, etc. and the hands-on-project is gift cards from Home Depot or Lowes to be used for needed repairs. Registration begins July 1 – October 1. There is no registration fee, just a willingness to serve. Go to www.wnccumw.org to register.

Tracey Owens, Blue Ridge District Mission Coordinator for Spiritual Growth

Education and Interpretation



Those who attended the Roma mission study on May 17 at Groce UMC were richly blessed. Janice Lentz enlightened us about Europe's largest minority group who have been oppressed for centuries. Special thanks to Janice, to Groce UMW for hosting, and to Oak Grove and Windom for providing refreshments.

Now it's time to look forward to next year's mission study. **Mission u** takes place July 17-20 at Pfeiffer College with a spiritual growth study (How is it with your soul?), a general issue study (The Church and People with Disabilities), and a geographic study (The Roma of Europe). The hands on mission project is layette kits.

Our units are doing a good job collecting the relief-supply kits for UMCOR. At the Spiritual Growth Retreat, the district turned in 350 health kits, 63 sewing kits, 9 layette kits, and two flood buckets with a total value of \$5,759. We turned in almost \$1,000 to help with shipping and toothpaste for the health kits. According to Dwaine Morgan with the Mission Response Center, all kinds of kits are needed with the

exception of flood buckets and birthing kits. Unfortunately, as hurricane season approaches, the demand for kits is likely to increase.

Keep working to achieve Mission Today status for 2014! If there are questions, please contact me.

Gwen Harris, Blue Ridge District Mission Coordinator for Education and Interpretation

Social Action



Social Action Priorities for 2014

- To continue education and advocacy about **Human Trafficking**
- To continue education and advocacy about **Domestic Violence**
- To continue education and advocacy about **Immigration Reform**

It seems impossible to believe that we are in the second half of our UMW Year. We have been so blessed to have had so many wonderful events this year -- Prayer Breakfast, Spiritual Growth Retreat, and Assembly 2014. This was my first time to attend an Assembly and I certainly was not disappointed. The speakers, workshops, and displays were so great! I wish all of you could have been there.

One of the biggest blessings of being a United Methodist Women is the opportunity to meet so many sisters in Christ that are committed to fulfilling our *Purpose*. Thanks for the invitations to be a part of your unit meetings. All of our district officers are grateful to visit with you and share information.

As we begin the second half of our year, continue to work hard to be a *Justice Today Unit*. There are many resources available to help your units with this. Utilize the *Charter for Racial Justice* and the *Racial Justice Timeline* in one of your programs. Call upon district officers for help. Please invite your Nurturing Partner to visit one of your meetings. Continue to read books from the *Reading Program* to educate yourself about social action issues.

Lucy Earls, Blue Ridge District Mission Coordinator for Social Action

Membership, Nurture, Outreach

I had the pleasure of attending The Mother's Day Tea at Fletcher U MW May 10th. What a great and wonderful group of ladies. Thank you for inviting me to your Mother's Day Tea.

Groce U MW hosted The Mission Study May 17th Diane Terry President of the unit did a wonderful job. There were 39 in attendance.

We had the opportunity to have our District Executive Committee Meeting at The J Iverson Riddle Center at Morganton N.C. June 7th. We were given a tour of the facility and visited the gift shop. Amazing work is done at this facility and you can see God's work in motion. If you or your unit have the opportunity to visit this facility make plans to do so.

The Mission Walk will be at Brooks-Howell Home Aug 13th. Encourage your unit, Church, friends and neighborhood to participate in this walk. Sponsor someone to walk if you are unable to walk Sponsor sheets are available on line www.wnccum.org. Also I have sponsor sheets available let me know if you need one. All monies raised with the mission walk goes to missions.

Invite your Nurturing Partner or a District Officer to your unit for a visit they look forward to visiting, sharing ideals and plans and learning different ways that can make a difference. We grow together.

Looking forward to seeing you at The Annual meeting Aug 13th at Brooks-Howell Home.

Kathy Morgan, Blue Ridge District Mission Coordinator for Membership, Nurture, and Outreach

[Program Resources](#)

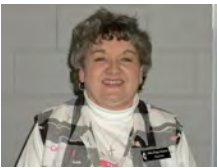


I hope everyone is having a great summer and enjoying the warm weather. On a lazy day please take some time to read a selection from the UMW reading list. Since our annual meeting is being held at the Brooks Howell Home we have limited space so we will not have a resource section per se. But if you need something if you can let me know by mid July, I will be happy to order it and bring to the meeting. My phone is [828-231-3229](tel:828-231-3229) or [828-683-4678](tel:828-683-4678). E mail kenkat12003@yahoo.com. Or mail me at P O Box 2556 Leicester NC 28748.

Link to UMW Reading Program: <http://new.gbgm-umc.org/umw/programs/readingprogram/>

Kathy Kennedy, Blue Ridge District Secretary of Program Resources

[Historian](#)



Thanks to everyone who took the scrapbooks and pictures from the former Asheville and Marion Districts. These memories and activities are very important and need to be preserved for future generations.

Since our last newsletter some of us have attended National Assembly and Spiritual Growth Retreat. Both of these events were very inspiring and we felt so blessed when we left. If you have never attended Spiritual Growth Retreat, please try to attend in 2015. It gets better every year!.

Judy Hawkins, Blue Ridge District Historian

[Communications Coordinator](#)



I was very fortunate in that I was able to attend one day of the UMW Assembly 2014 in Louisville, Kentucky. What an incredible event! Please see a few of the pictures that Judy Hawkins and I took on pages 18 and 19. (View the newsletter in color from the Western North Carolina Conference UMW website. See below)

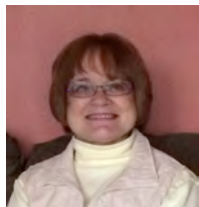
This newsletter is being mailed to you and we are very sorry if you did not get the April newsletter. If you would like to view last quarter's newsletter, you may go to <http://www.wnccumw.org>> District Information (left column) > and click on Blue Ridge. There are lots of pictures from the Prayer Breakfast!

2014 Deadlines for information for the District Newsletter are:

Sept. 15, 2014 (Newsletter for October)

Peggy Sanders, Blue Ridge District Communications Coordinator

Committee on Nominations



The Spiritual Growth Retreat was a great experience and a sharing experience with over 700 other UMW. However, I feel a loss for those who were unable to join us. While helping with registration, I saw a name tag that said "friend". It was explained to me that when someone registered, she also registered another in anticipation of getting a friend to come with her. That is positive thinking. Think how hard we would try to encourage another to join us if we had already registered and paid. Let us all spread that kind of positive thinking in increasing our membership and leadership..

Jackie Rio, *Blue Ridge District Nomination Committee Chair*

A Franciscan Benediction

May God bless you with discomfort
At easy answers, half-truths, and superficial relationships
So that you may live from deep within your heart.

May God bless you with anger,
At injustice, oppression, and exploitation of people,
So that you may work for justice, freedom, and peace.

May God bless you with tears
To shed for those who suffer pain, rejection, hunger, and war,
So that you may reach out your hand to comfort them and
To turn their pain into joy.

And may God bless you with just enough foolishness
To believe that you can make a difference in the world,
So that you can do what others claim cannot be done:
To bring justice and kindness to all our children and the poor.

Amen

School Kit Materials

1 pair blunt scissors

- Rounded tip only
- No plastic scissors please.

3 pads of paper

- Spiral- or top-bound pads;
- 150 sheets or less of loose-leaf paper can be substituted for 1 pad;
- Combinations of spiral, top-bound, side-bound, or loose-leaf paper is acceptable.

1 hand-held pencil sharpener

- Must be at least 1" long;
- Remove from packaging.

1 30-centimeter ruler

- Hard or flexible;
- Cartoon characters are acceptable;
- No advertisements please.

6 unsharpened pencils

- No advertisements, religious, patriotic, military, or camouflage symbols please;
- Cartoon characters are acceptable.

1 2-inch or larger-size eraser

- No advertisements, religious, patriotic, military, or camouflage symbols please;
- Cartoon characters are acceptable.

1 24-count box of crayons

- Only 24-count boxes please.

1 14" x 16" cloth bag

- Homemade or purchased bags are both acceptable;
- Heavy-duty fabric only, such as denim, corduroy, drapery fabric, etc.;
- No advertisements, religious, patriotic, military, or camouflage symbols please;
- Closures are optional but must be buttons, snaps, or Velcro sewn in middle of opening.
-

Assembly Directions

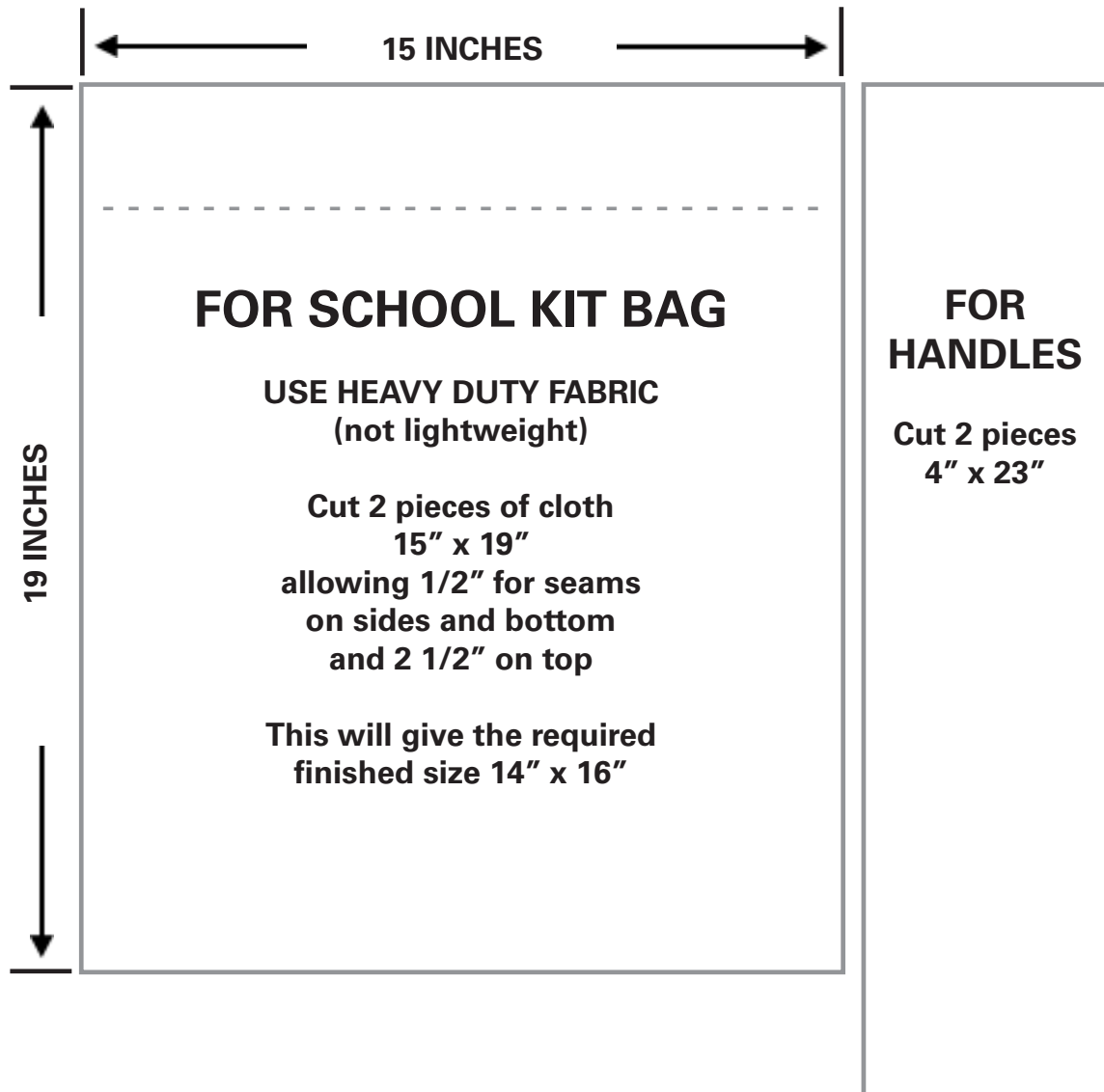
Place all loose items on top of paper. Turn items sideways and slide into the cloth bag. Fold over the top of the bag so loose items don't fall out.

Important Notes

- All items must be new.
- All emergency kits are carefully planned to make them usable in the greatest number of situations. Since strict rules often govern product entry into international countries, **it is important that kits contain only the requested items**, nothing more.
- Do not include any personal notes, money, or additional material in the kits. These things must be painstakingly removed and will delay the shipment.

Processing & Shipping Costs: Please enclose an envelope containing at least \$1 for each kit you send. This donation enables kits to be sent to areas in need.

School Kit Bag Pattern



School Kit Bag Pattern

(continued)

Make the Bag

USE HEAVY DUTY FABRIC (not lightweight). Cut 2 pieces of cloth 15" x 19" allowing 1/2" for seams on sides and bottom and 2 1/2" hem at the top. This will give the required finished size 14" x 16".

Place the two 15" x 19" pieces of cloth together, right sides together, and sew a 1/2" seam down one side across the bottom and up the other side, leaving the top open.

Turn the bag so the seam is inside the bag.

Turn under 1/2" of the top edge and stitch.

Turn under 2" at the top to form a hem and stitch.

Make the Handles

For handles cut 2 pieces 4" x 23".

Fold in half the length of one of the 4" x 23" pieces with right sides together. Stitch with a 1/2" seam allowance and turn the seam to the inside.

Repeat with the second piece of cloth.

Place one handle at the top of the bag, turning under 1/2" raw edge of the material and secure by stitching. Repeat with the other piece of cloth making the handle on the opposite side of the bag.

Optional Closure

Closures are optional and may be done with buttons, snaps or Velcro.

When using Velcro, stitch small pieces of Velcro near the top center inside of the bag, Velcro loops on one side, Velcro hooks on the other.

We are faith, hope and love in action.



FAITH

Thousands of women participate in our reading programs and educational opportunities annually to grow spiritually, become more deeply rooted in Christ and put faith into action.

HOPE

Our national mission institutions empower women, care for children, educate and equip youth, care for the neglected, advocate for social justice issues, create economic opportunities and strengthen neighborhoods.

LOVE

Our members give out of their love for the world and provide financial support for national mission institutions, higher education scholarships for international students, and 121 programs taking place in 110 countries.

ACTION

United Methodist Women members' voices are heard around the world as they call for justice on issues such as immigration, human trafficking, domestic violence, health care and the environment.



UNITED METHODIST WOMEN Western North Carolina Conference

What: 41st Annual Meeting
Celebration of 145 Years in Mission

When: September 5, 6 & 7, 2014
Registration begins 1pm; Program 6:45pm

Where: Lake Junaluska, Stuart Auditorium

Theme: Make It Happen!

Celebration Highlights:

Keynote Speaker: Yvette Richards, a native of North Carolina, highly involved in her career, church & community and currently serving as United Methodist Women National President. We look forward to having her bring some of Assembly 2014 in Louisville back to Western North Carolina.

Mission Speaker: Barbara Campbell, well-known deaconess, retired at Brooks-Howell Home. We look forward to hearing about her mission experiences.

Music Leaders: Kathy McNeil
Craig Summers

Hands-On Mission: Gift to Mission Cards and UMCOR Bedding Kits (2 full flat sheets, 2 std pillowcases, 2 std pillows in cardboard box; \$1 shipping)

Workshops: Immigration;
Catherine Ritch Book Review on You Raise Me Up: Making It Happen for Children of the Ark;

Conversations with Yvette

Other highlights:

- Hosting Missionaries for Lunch
- Late Night Entertainment— "Celebrating 145 Years!"
- Sunday School with Rev. Alvord
- Singing at the Cross
- UMW Choir
- Fellowship with UMW Sisters
- Walks along the Lake and Gardens!

Hostess District: Catawba Valley

Join Us by the Shore of the Lake!

Annual Meeting Registration:

(Begins June 16, 2014)

- On-site registration at Lake Junaluska - \$20.00 per person
- **Get a DISCOUNT! Register early and ONLINE!** Online advance registration, June 16, 2014 through August 25, 2014 is only \$11.00 per person! Use the online registration link on our website at www.wnccumw.org.
- Advance registration fees are transferable, but non-refundable. If you pre-register and are unable to attend, your registration fee is not refundable, but someone else can attend in your place.
- **Register yourself AND others!** Our online registration offers the opportunity for you to register up to 35 guests at the same time that you do your own registration. Help other members of your local unit to register online — especially those who may not use a computer! Each registration must have a unique email .
- **DO NOT** mail Annual Meeting registration fee money to Lake Junaluska. Contact us if you have a question about registration.



Complete information about
Annual Meeting
is available on our website:
www.wnccumw.org

Mark your calendar!

Contact Persons:

Annual Meeting Program
Julia Willis, Vice President
jawillis1@aol.com
336-685-4857

Questions about Online Payments
Martha Phillips, Conference Treasurer
mcwphillips@gmail.com
828-765-7009

Questions & Assistance:
Online Registration
Lynne Gilbert, Webmaster
lgilbert.umw@gmail.com
336-207-3479



Lake Junaluska
Conference & Retreat
Center, Lake Junaluska, NC

Reservations Phone #:

1-800-222-4930 (Toll Free)
1-828-452-2881

**Lake Junaluska
Reservations:**

**Housing Reservations
Open June 16, 2014**

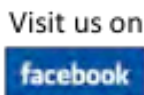
To book Lake Junaluska
lodging for the
Annual Meeting (Group #5851):

- Call the Lake Junaluska reservations department at 1-800-222-4930. Then select 1 for the Reservations Department, and the next available agent will be glad to assist you. The Lake Junaluska reservations team is on duty from 8:00 am until 5:00 pm, Monday through Friday.
- Reservations can also be made online at: <https://bookings.ihotelier.com/bookings.jsp?groupID=1004769&hotelID=77715>



United Methodist Women
Western North Carolina Conference

Visit our Website:
www.wnccumw.org



www.facebook.com/wnccumw

2014 Annual Meeting

September 5-7, 2014 - Lake Junaluska, North Carolina

Lake Junaluska Accommodations & Rates

The Terrace Hotel or Lambuth Inn

(Private baths, heat, air conditioning, TV, phone, elevator, WIFI)

Rates are per person, per day, room & meals.

	Room	Meals*	Total
Single	\$88	\$30	\$118
Double	\$54	\$30	\$84
Triple	\$37	\$30	\$67
Quad	\$31	\$30	\$61

*Lake Junaluska operates The Terrace and Lambuth on an American Plan, and meals are required with the room.

Lakeside Lodge

(Private baths, heat, air conditioning, TV, phone, no elevator)

Rates are per person, per day, no meals.

Single	\$70
Double	\$41
Triple	\$31
Quad	\$25

Mountainview or Sunnyside Lodge

(Private baths, heat, air conditioning, no phone, TV, WIFI)

Rates are per person, per day, no meals.

Single	\$58
Double	\$36
Triple	\$28
Quad	\$25

Junaluska Apartments

(Private baths, heat, air conditioning, no phone, no TV)

Rates are per person, per day, no meals.

Single	\$58	Quad	\$25
Double	\$36	Quintuplet	\$22.80
Triple	\$28	Sextuplet	\$21.33

Plus \$14 per additional person over six people

Apartments are furnished with linens and blankets. Type A, C, & D have kitchens with small refrigerators, counter top burner, microwave, and limited equipment and dishes.

Lake Junaluska Lodging Information:

The minimum deposit for all Lake Junaluska facilities is \$35 per person. Reservations are not confirmed until deposit is received. Deposits must be received or room(s) will be released. In order to cancel a confirmed reservation, a cancellation request must be made 30 days prior to arrival date to receive a refund of the deposit less a \$15 per person processing fee. Deposits are on an individual basis; for group or family reservations in which individuals do not attend, the deposit will not be refunded or allowed to apply against charges for those who come. Check in at all facilities is 3:00pm; check out is 11:00am.

Meal Information:

The room rate that shows on your confirmation letter is the room rate only, meals are an additional cost. Meals are optional for all facilities other than the Terrace Hotel or the Lambuth Inn. Guests staying in optional meal facilities may purchase a 3 meal package at the same cost of \$30.00 per person for each 3 consecutive meals, or individual meals can be purchased: \$9.00 for breakfast, \$11.00 for lunch and \$13.00 for dinner. Children 6 through 11 years of age receive meals at half price, 5 years of age and under eat free. Meal package of \$30.00 per person, per day will automatically be added for each person staying in the Terrace Hotel or the Lambuth Inn.

Do It Yourself!

Make your own backyard exhibit to explore issues around violence.

Create a backyardlike experience by gathering:

- T-shirts with messages about domestic violence.
- Clothesline.
- Clothespins.
- Flowers.
- Picnic table.
- Domestic violence infographic (available for download from www.flickr.com/umwomen/5264222728/in/set-72157624801782785).
- Facts about domestic violence, gun violence and bullying in your state or community.
- Signs with information about violence (available for download from Assembly2014.org).
- Handouts on ways to take action (available for download from Assembly2014.org).

Invite members of your congregation and unit as well as friends to experience, learn and Make It Happen!



United
Methodist
Women

FAITH · HOPE · LOVE IN ACTION

Make It Happen for Maternal and Child Health

Our History

Health care for women and children is at the heart of United Methodist Women today, and has been since the organization was founded in the 1800's.

In 1869, Dr. Clara Swain was sent to Bareilly, India, to provide quality medical care to women. She has been called the "pioneer woman physician in India," as well as the "first fully accredited woman physician ever sent out by any missionary society into any part of the non-Christian world."

Our foremothers made the choice to act to save women's lives. They chose to build hospitals and clinics, to train women and girls to serve as doctors and nurses, and to send missionaries to initiate the work.

Today, United Methodist Women continues to support the health and family needs of women and children around the globe. Women are still dying in childbirth, children continue to die from preventable diseases, and many communities have no access to healthcare.

From Latin America to Africa to Asia, United Methodist Women works with women worldwide to address:

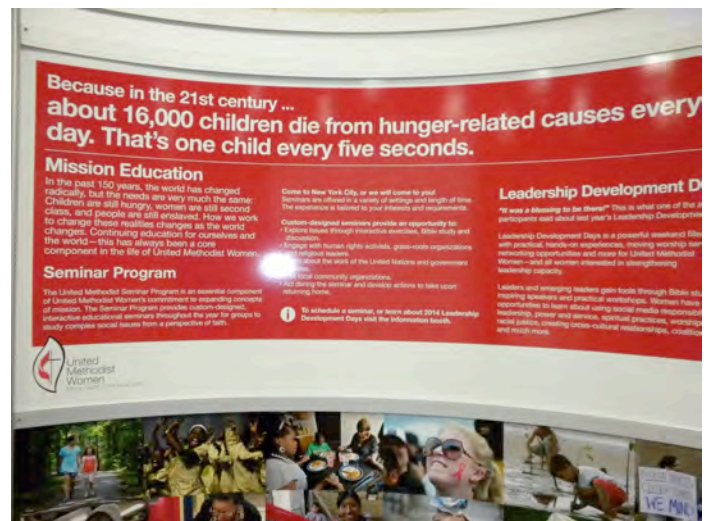
- Access to healthcare
- Educational opportunities in medical fields
- Child protection
- Crisis ministries for women who are victims of violence at home or during periods of war and conflicts
- Reproductive health – family planning, cancer screening, healthy childbirth
- Advocacy for equity in law and services for women and children
- Informal educational workshops on healthy living for teens at risk, lactating mothers who are HIV-positive, mothers who need new ideas on nutrition, and basic health, hygiene and disease prevention
- Trauma and mental health counseling

In the U.S., a number of community centers in our network of national mission institutions provide maternal health services to improve access to care for underserved populations. Services include:

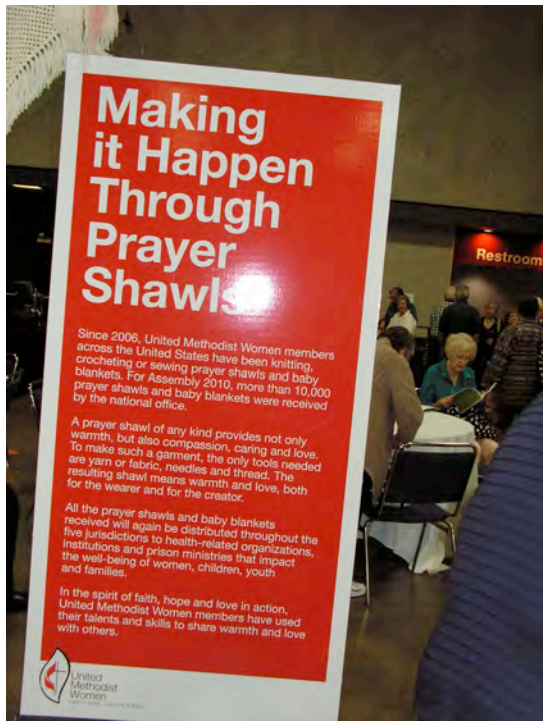
- Pre-natal and postpartum care
- Baby supplies
- Parenting support
- Shelter and legal services
- Health care

Many of our deaconesses and home missionaries live their calling to ministries of love, justice and service by working as health care professionals. They work as:

- Parish nurses and Research nurses
- Physicians and community health directory
- Volunteer coordinators



UMW Assembly Louisville KY 2014





Is that President Joanie under that hat?



Some of your district officers were having too much fun!
 Plan to attend the next UMW Assembly in 2016 so you can have this
 much fun, too, and learn how the United Methodist Women are helping
 women, children, and youth around the world! - 19 -

response



Blue Ridge District United Methodist Women
%CENTRAL UNITED METHODIST CHURCH
27 CHURCH STREET
ASHEVILLE, NC 28801-1218

Mark Your Calendar for 2014:

Blue Ridge District UMW Events

- August 23 **District Annual Meeting**, Brooks-Howell Home, *Moving on in Celebration*
October 18 **Ubuntu Service Day**, Brooks-Howell Home
Nov. 2 **Blue Ridge District Leadership Training**, Location: TBD, *Moving on to Lead*

Western North Carolina Conference UMW Events

- July 17-20 **Mission u!** (Previously School of Christian Mission), Pfeiffer University, Misenheimer, NC
Oct. 11 **District Officer Training**, Granite Falls UMC
Sept. 5-7 **Conference Annual Meeting**, Lake Junaluska



For More Information:

Visit our Web Site: www.wnccumw.org

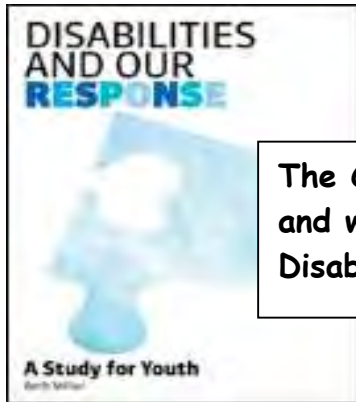
Join our Conference UMW Email List

Read the **Conference Gram** and your District Newsletter

Visit us on **Facebook**: www.facebook.com/wnccumw

Visit us on **YouTube**! www.youtube.com/user/wnccumw

Mission U 2014
NEW Residential Youth Study
July 17-20
Pfeiffer University,
48380 U.S. Highway 52N
Misenheimer, NC



**The Church & Ministry to
and with People with
Disabilities**

New for 2014 is the creation of a Resident Youth Camp.

In the past, the WNCUMW has hosted a one day study for high school students. This year Mission u is providing the opportunity for up to 15 high school students to participate in study, worship, fellowship and hands-on ministry!

Theme: "Disabilities and Our Response"

This is a study for young people regarding attitudes and responses toward persons with disabilities. We acknowledge all as children of God, each created in God's image but unique. Each person brings different abilities and disabilities to the community. In God's kingdom, everyone has a place. Youth will develop a new understanding of persons with disabilities.

Leaders: Rev. Sherri Barnes and Sherry Sink

COST: \$150 per student. The expectation is that the student will pay \$50 towards the experience with their local church/UMW unit paying the balance of \$100.

AGE: Mission u is open to high school students who have completed 9th grade through those who have completed 12th grade.

SPECIAL NEEDS: If you have any physical conditions that require consideration in room or classroom assignment, please explain on registration form or on separate sheet of paper stapled to your form.

HOUSING: Housing will be in College Dormitories. Pfeiffer Student Leaders will be serving as Camp Leaders!

What to Bring:

- **Your Bible (of course!!)**
- Musical instrument if you play
- Toiletries (soap, shampoo, body wash, etc. etc. etc.!!) Whatever you need to be clean & happy!
- Outdoor toiletries (bug spray & sun screen) Whatever you need to be comfortable!
- Sheets/blanket/pillow (Twin XL) or a sleeping bag instead of sheets/blanket
- Bath towels/wash cloths/hand towels
- Rain gear if forecasted
- Clothes, sleepwear, & footwear (**SOCKS & SHOES**) that will keep you comfortable & happy!

ON Friday and Saturday, we will be going out into the community for hands on ministry experiences. You will need to wear a T-shirt or tank top (no spaghetti straps), shorts are fine (not too short), socks and closed toed shoes. (You MUST have closed toed shoes).

- Medicines (Please bring them in prescription bottles/containers)-Need parent/legal guardian's permission/advisement regarding your medicine schedule
- Copy of your health insurance card & vaccination records
- List of any dietary restrictions/concerns
- Jacket, sweat shirt, hat, sun glasses
- Small amount of spending money if desired
- Camp Chair
- It's OK to bring electronic devices (computers, e-readers, tablets, cell phones, etc. etc. etc.) **BUT you are responsible for them.** (Wireless internet is available on the campus.)
- **DO NOT BRING: Expensive items or items of sentimental value that you would be unhappy if they were lost or broken!**
- **Also plan to bring Open Minds, Open Hearts, & Open Hands!!!!**

CONSENT FORMS: For youth participants, there are covenant and consent forms that must be completed and accompany the basic registration form. Those forms are available from the school officers, district presidents, and our conference website at www.wncumw.org. **There will be a youth curfew in effect at 11:30pm**

REGISTRATION - 2014 Western NC Conference Mission u – YOUTH STUDY

STUDENT INFORMATION: *Please PRINT CLEARLY and complete all information.*

Name: _____ First Timer? () Yes
(Name for name tag)

Church: _____ District: _____ () Female () Male

Date of Birth: _____ (m/date/year) Grade Level for 2014-2015 school year: 10 ___ 11 ___ 12 ___ College ___

Address: _____
Street, P. O. Box City State Zip

Telephone : () _____ Email: _____

Roommate (if applicable) _____ (Must be sent in together!)

In case of Emergency, contact: Name: _____ Telephone: () _____

Special Housing/Classroom Needs *(please be specific)*: _____

REGISTRATION FORM & PAYMENT DUE BY JUNE 25, 2014

Make Checks payable to: UNITED METHODIST WOMEN

Mail Check and Registration form to:

Virginia Robinson
2141 Millstone Drive
Morganton, NC 28655

Registration is open May 1-June 25, 2014
All Registrations must be postmarked no later than
June 25, 2014.

THERE WILL BE NO ONSITE REGISTRATIONS

Call/Email/Text Questions or Concerns to
Sherri Barnes - sherri.barnes@pfeiffer.edu or 704-463-3073



Permission/Medical Release Form for Mission u 2014

This form is necessary for any student wishing to stay overnight in a Pfeiffer University Residence Hall. Clearly print, provide necessary signatures, and submit to the Office of Church Relations.

Students will not be permitted to attend Mission u without completing this form.

Date: _____

Student Name: _____ T-Shirt size _____

Address: _____

Home Phone: _____ Cell Phone: _____

High School: _____ Grade (2014-2015 school year) _____

Medical Concerns/Allergies: _____

Parent Name: _____

Address: _____

Home Phone: _____ Cell Phone: _____

Parent/Guardian

I give permission for my child, named above, to visit and stay overnight in a Residence Hall at Pfeiffer University. I hereby release and hold harmless Pfeiffer University, its trustees, administrators, and employees from any and all liability, damage, or claims made against them related to my child's participation in this visit to Pfeiffer University. In addition, I authorize a representative of Pfeiffer University to consent to medical care of my child in the event I cannot be reached.

Student

I agree to abide by all laws, policies, and rules set forth by Pfeiffer University and its staff. I understand failure to do so could result in notification of my parent/guardian and a request that I leave campus.

Authorization to use photographs and/or audio-visual

I hereby authorize Pfeiffer University to use, reproduce, and/or publish photographs, voice reproductions and/or video that may pertain to my child. I understand that this material may be used in any legal manner in various publications, promotional or recruitment materials or for other related endeavors. This material may also appear on Pfeiffer's website, social media outlets and in university publications. I understand that by signing this release, I waive any and all present or future compensation rights to the use of the above stated material(s).

Signature of Parent/Guardian

Date

Signature of Student

Date

United Methodist Women

WESTERN NORTH CAROLINA CONFERENCE

2014 MISSION U

Important Information for Youth Participants, Parents & Chaperones

The Western North Carolina Conference United Methodist Women are committed to providing a safe and secure environment for all youth and volunteers who participate in programs and activities sponsored by the conference.

While keeping in mind that this is a volunteer organization with no paid staff, we will follow reasonable safety measures in the selection of volunteers & workers with youth; we will implement prudent operational procedures in programs & events where youth are participating; and we will educate our volunteers & workers with youth regarding the use of appropriate policies, and methods.

As a part of our commitment to providing a safe and secure environment, it is our policy to require that youth participants, their parent(s) or guardian(s), and their adult chaperones complete the following forms:

1. Medical Release and Consent for Treatment Form for Youth

This form is to be completed by the parent(s) or guardian(s) and signed by both the parent or guardian and the youth participant.

2. Covenant and Consent Form for Youth

This form is to be completed and signed by both the youth participant and her parent(s) or guardian(s).

3. Covenant Form for Chaperones of Youth

This form is to be completed and signed by all non-parent or non-guardian chaperones.

Please complete the enclosed set of forms, with all appropriate signatures, and return them along with your registration form and registration fee to:

Virginia Robinson, Business Manager
WNCC Mission U
2141 Millstone Drive
Morganton, NC 28655

The registration for a youth participant will not be considered to be approved and accepted until these forms have been completed and returned.

If you have questions, you may contact Sandra Williamson, Dean of the 2014 WNCC MISSION U, at 336-681-7258 (cell phone) or email to sandra@ncat.edu.

United Methodist Women
WESTERN NORTH CAROLINA CONFERENCE

2014 MISSION U

Medical Release and Consent for Treatment Form for Youth

I give my permission for _____
Print Name of Youth Participant

to attend the MISSION U, to be held at Pfeiffer University, July 17-20, 2014. I understand that I cannot hold the Western North Carolina Conference United Methodist Women, its designated person in charge, or volunteer leadership responsible for any accident or injury that my daughter/son may incur while participating in this event.

I also understand that if my daughter/son becomes ill or injured during this event, I give my permission for her/him to be treated at the nearest medical facility, and I agree to pay all expenses related to medical treatment.

We, the undersigned, have read, understand, and agree to comply with the conditions stated above for participation in MISSION U.

Parent or Guardian Signature Date

Youth Participant's Signature Date

Additional Required Information

Name of Youth Participant: _____

Address: _____

Phone #: _____ Cellphone #: _____

Age: _____ Birth Date: _____

Local Church: _____

Parents' Names: _____

Emergency Phone # and Contact Person: _____

Medical Insurance Company: _____

Policy/Number: _____

Doctor's name & Phone Number: _____

Allergies and/or medical problems: _____

Prescription or Non-prescription medications: _____

Other important health or dietary concerns: _____

United Methodist Women
WESTERN NORTH CAROLINA CONFERENCE

2014 MISSION U

Covenant and Consent Form for Youth

Print Name of Youth Participant

COVENANT:

As a participant in MISSION U, I take seriously my responsibility and affirm my commitment for the well-being and safety of others and myself. I agree to remain on the site unless I have been given permission to leave by my chaperone and the Western North Carolina Conference United Methodist Women's designated person in charge. I will attend all activities, including meals. I will observe the scheduled curfew of 11:30pm by being in my room, being quiet, and not disturbing others. I will not use tobacco, illegal substances, or alcohol. I will respect the equipment and property of others and care for the facility that we share.

This covenant is made between each youth participant and the whole group. I understand that if I break the covenant, and if the brokenness cannot be reconciled, that my parent will be contacted and I may be sent home from the event.

Youth Participant Signature

Date

CONSENT OF PARENT OR GUARDIAN:

I give my permission for my daughter to participate in MISSION U to be held at Pfeiffer University, July 17-20, 2014. I have read the covenant, which my daughter/son has signed, and I understand the responsibilities to which she/he has agreed. I will support her/him in fulfilling this covenant.

I understand that it is essential that my daughter/son conduct herself/himself appropriately and refrain from the use of alcohol, cigarettes, tobacco, drugs, cursing, and other inappropriate behavior that may detract from the purpose of MISSION U or hinder other participants from enjoying the event. If it becomes necessary to take disciplinary action with my daughter/son, I will be advised of the situation, and I agree to cooperate in resolving the problem as amicably as possible. If the situation requires that my daughter/son be sent home from the event, I agree to assist with transporting my daughter/son from the event location to her/his home.

Check as appropriate:

_____ I will be attending MISSION U with my daughter/son, and will be her/his chaperone for the time that we are at MISSION U. I affirm my commitment to be responsible for her/his well-being and safety. I agree to know of her/his whereabouts at all times, and I take responsibility for her/his behavior while at MISSION U. If we are resident students, I agree to room with her/him on campus or to stay in a suite with her/him if another youth attends with her/him.

_____ I will not be attending the MISSION U with my daughter/son, but I have designated the following person to serve as her/his chaperone:

Name of Chaperone: _____
Please Print

Parent or Guardian Signature

Date

United Methodist Women
WESTERN NORTH CAROLINA CONFERENCE

2014 MISSION U

Covenant Form for Chaperones of Youth

COVENANT:

As a participant in MISSION U, to be held at Pfeiffer University, July 17-20, 2014, I have been given permission by her/his parent(s) or guardian(s), and I have agreed to serve as the chaperone of:

Print Name of Youth Participant

I covenant that I will take seriously my responsibility as a chaperone, and I affirm my commitment to be responsible for the well-being and safety of the youth participant in my care. I agree to know of her/his whereabouts at all times, and I take responsibility for her/his behavior while at MISSION U.

For resident student youth chaperones: I agree to room with her/him on campus or to stay in a suite with her/him if another youth attends with her/him.

I understand that the youth participant has signed the following covenant:

Youth Covenant:

As a participant in MISSION U, I take seriously my responsibility and affirm my commitment for the well-being and safety of others and myself. I agree to remain on the site unless I have been given permission to leave by my chaperone and the Western North Carolina Conference United Methodist Women's designated person in charge. I will attend all activities, including meals. I will observe the scheduled curfew of 11:30pm by being in my room, being quiet, and not disturbing others. I will not use tobacco, illegal substances, or alcohol. I will respect the equipment and property of others and care for the facility that we share.

This covenant is made between each youth participant and the whole group. I understand that if I break the covenant, and if the brokenness cannot be reconciled, that my parent will be contacted and I may be sent home from the event.

As her/his chaperone, I will support her/him in fulfilling that covenant.

Chaperone Signature

Date

Mission u !

Pfeiffer University
48380 US Hwy 52N
Misenheimer, NC 28109

July 17-20, 2014

Our Courses of Study

Spiritual Growth Study: How Is It With Your Soul?

Study leader: **Rev. George Ragsdale**

One-Day Overview Leader: **Rev. Holly Adams**

This study brings into balance the inner and outer dimensions of the Christian life. Organized around four verbs—pray, learn, mentor and transform—our study will challenge you to become a more vibrant disciple of Christ.

Geographical Study: The Roma of Europe

Study leader: **Patricia Moore**

The Roma are the single largest minority in Europe. We will learn their history and culture with emphasis on Eastern Europe, explore the ways they are treated in contemporary Europe, and investigate ways the church is working alongside them. How will we respond and advocate?

Social Issue Study: The Church and People With Disabilities

Study leaders: **Ann Aldridge, Rev. Jaylynn Byassee, Jennifer Davis, Rev. Dr. Lillie Madison Jones, Micheline Ridley Malson, Beverly Maulden, and Debora Rice**

The intent of this study is to build awareness in the church regarding issues around disability, to call the church to provide full accessibility to services and opportunities, and to promote advocacy for justice for people with disabilities.

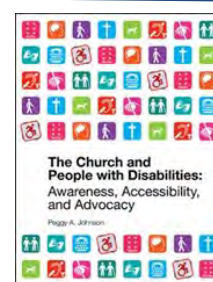
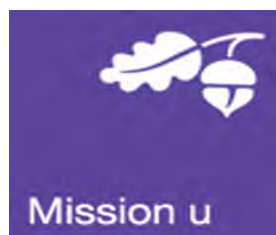
Come and Learn with us!

Who Should Attend?

Anyone who wants to worship God, learn new things, and enjoy the fellowship of other Christians
Local officers and members of United Methodist Women/
District and Conference UMW Officers/
District Chairpersons of Mission Engagement/Ministers
and all men, women, and youth of the Church
Especially calling out to teens for our new Youth Camp!

Mission u theme 2014:

"Learning Together for the Transformation of the World"



For a second year, the national theme for Mission u is the same. In Romans 12:2, St. Paul advised, "Do not conform to the pattern of this world, but be transformed by the renewing of your mind. Then you will be able to test and approve what God's will is—his good, pleasing and perfect will." (NIV)

God's ultimate will for humankind is that all persons will have abundant life: We study and learn together so that, through the renewing of our minds, the world may be transformed.

Our graphic images are the covers of our study texts. Taken together, they remind us to explore and reaffirm our own connections to God, to learn and reconnect to our neighbors near and far, and in renewing our minds, to identify ways our church can do more to open the floodgates of inclusion and equality. Learning together, we can be transformed into God's compassionate people.

Registration is open May 1-June 25, 2014

All Registrations must be postmarked no later than

June 25, 2014

NO ONSITE REGISTRATIONS

Workshop for Leaders of Children

Leader: **Kim Keyse**

Session Time: 4:15 pm Friday or Saturday

Mission u 2014 Full time Youth Camp

Leaders: **Rev. Sherri Barnes and Sherry Sink**

Theme: "Disabilities and Our Response"

This is a study for young people regarding attitudes and responses toward persons with disabilities. We acknowledge all as children of God, each created in God's image but unique. Each person brings different abilities and disabilities to the community. In God's kingdom, everyone has a place. Youth will develop a new understanding of persons with disabilities.

Registration:

May 1, 2014-June 25, 2014

New this year:

Full time Youth Camp: \$150.00 per person

Housing in New Hall: (suite-style)

Residence: \$175.00 per person

Resident Double: \$135.00 (two persons sharing)

Resident Private: \$155.00

(LUNCH ON SUNDAY WILL NOT BE PROVIDED)

Non-Resident: \$40.00 (No meals)

Non-Resident: \$80.00 (With 4 meals—Lunch and Dinner Friday and Saturday)

One-Day Overview: \$20.00 (No meals)

One-Day Overview: \$30.00 (Lunch included)

One-Day Overview Students will choose one study and will have 4 hours of session time in that study. You will not get both studies, unless you come to both days, and that certainly is an option for you.

ONE-DAY OVERVIEW STUDIES: Friday & Saturday. Registration is from 8:00 am-8:45 am with classes beginning at 9:00 am.

Watch for additional details on our Website:
www.wncumw.org

REFUNDS: There will be no refunds without at least 7 days notice. (\$25.00 of Resident Fee is not refundable.) **NO CHILD CARE AVAILABLE**

HOUSING: HOUSING WILL BE IN COLLEGE DORMITORIES. Bring bed linens, including a light blanket, pillow, towels, clothes hangers, grooming items, mirror, bathrobe, study lamp and any other items you feel necessary for your comfort away from home. (Wireless internet is available all over the campus.) There will be no linen rental.

SPECIAL NEEDS: If you have any physical conditions that require consideration in room or classroom assignment, please explain on registration form or on separate sheet of paper stapled to your form.

YOUTH: This year's youth camp is limited to 15 participants and will last the full time of Mission u 2014. For youth participants, there are covenant and consent forms that must be completed and accompany the basic registration form. Those forms are available from the school officers, district presidents, and our conference website at www.wncumw.org. There will be a youth curfew in effect at 11:30 p.m. each evening.

CLASSES: The Spiritual Growth Study, "How Is It With Your Soul?" will be offered to everyone. Please choose one of the other courses for more intensive study. Bring Bibles, pencils, paper, etc. Text books will be available from the Mission Resource Center in early spring, and at all Conference events prior to the school and in the Resource Room during the school.

CEU's and Advanced Lay Servant Certifications: Continuing Education Units and Advanced Lay Servant Certifications will be offered if requirements are met.

Dean

Sandrea Williamson
(336) 282-0807
Sandrea@ncat.edu

Assistant Dean

Lynda Morris
(704) 847-2521
Lfmorrisap@aol.com

Business Manager

Virginia Robinson
(828) 443-0679
robinsonva62@gmail.com

Housing Manager

Dianne Beam
(704) 996-1744
dbeam@wncumc.org

Hands-On Mission Project

Layette Kits

- 6 cloth diapers (pre-folded or plain/ no disposable diapers)
 - 2 shirts—undershirts or onesies
 - 2 infant sized washcloths, no adult-sized
 - 2 gowns or sleepers
 - 2 diaper pins - must have protective plastic closures / no regular safety pins
 - 1 sweater or jacket - must open from the front / may be hand knitted, crocheted, or sewn / hooded sweatshirts are acceptable
 - 2 receiving blankets - sizes may range from 28" x 28" to 32" x 32" / no crib blankets
- Assembly Instructions:** Lay one of the receiving blankets flat on a table. Set aside the diaper pins and place all remaining items on top of the blanket. Fold the blanket around the items and secure the bundle with the diaper pins. In a separate envelope, please include a check payable to UMCOR Sager Brown for at least \$1.00 per kit.

REGISTRATION - 2014 Western NC Conference Mission U

OFFICE USE ONLY	
Date	_____
Reg #	_____
Ck #	_____
Amt	_____

STUDENT TYPE: Please choose your student type / housing preference.

- | | |
|--------------------------------------------------------------------|------------------------------------------------------------------|
| <input type="checkbox"/> Youth Camp Student - \$150 | <input type="checkbox"/> Resident Student - New Hall - \$175 |
| <input type="checkbox"/> Resident Student - Double Room - \$135 | <input type="checkbox"/> Resident Student - Private Room - \$155 |
| <input type="checkbox"/> Non-Resident Student without meals - \$40 | <input type="checkbox"/> Non-Resident with meals - \$80 |

- One Day Over-View without lunch - \$20: Which Day? I will attend on _____ Friday _____ Saturday
- One Day Over-View with lunch - \$30: Which Day? I will attend on _____ Friday _____ Saturday

STUDENT INFORMATION: Please PRINT CLEARLY and complete all information.

Name: _____ First Timer? Yes
(Name for name tag)

Church: _____ District: _____ Female Male

Age Level: Youth 18 - 29 30 - 39 40 - 49 50 - 59 60 & over

Address: _____
Street, P. O. Box City State Zip

Telephone : () _____ Email: _____

Roommate (if applicable) _____ (Must be sent in together!)

In case of Emergency, contact: Name: _____ Telephone: () _____

Special Housing/Classroom Needs (please be specific): _____

CHOOSE YOUR MISSION STUDY:

Resident & Non-Resident Students, which Mission Study do you prefer? Note: All full-time students will participate in the Spiritual Growth Study in the Chapel, and in a full-time class of their choice.

- Roma - Geographic Study **or** The Church and People w/Disabilities - Social Issue Study

One-Day Overview Students, which Mission Study do you prefer?

- How Is It With Your Soul - Spiritual Study **or** The Church and People w/Disabilities - Social Issue Study

Workshop for Children's Leaders (4:15 pm Friday or Saturday): I plan to attend this workshop.

PLEASE CHECK ALL THAT APPLY: Are you a ... Conference Officer District Officer

Local Officer Unit/Circle Member UMW Stipend Recipient Mission Personnel

Deaconess Clergy School Study Leader

PLEASE CHECK IF YOU WOULD BE WILLING TO HELP AT MISSION U AS A:

Golf Cart Driver Class Hostess (Assisting the study leader each day as needed)

Class Secretary (Taking roll in classes each day and turning the roster in at the end of the school.)

REGISTRATION FORM & PAYMENT DUE BY JUNE 25, 2014

Make Checks payable to: UNITED METHODIST WOMEN

Mail Check and Registration form to:

Virginia Robinson
2141 Millstone Drive
Morganton, NC 28655